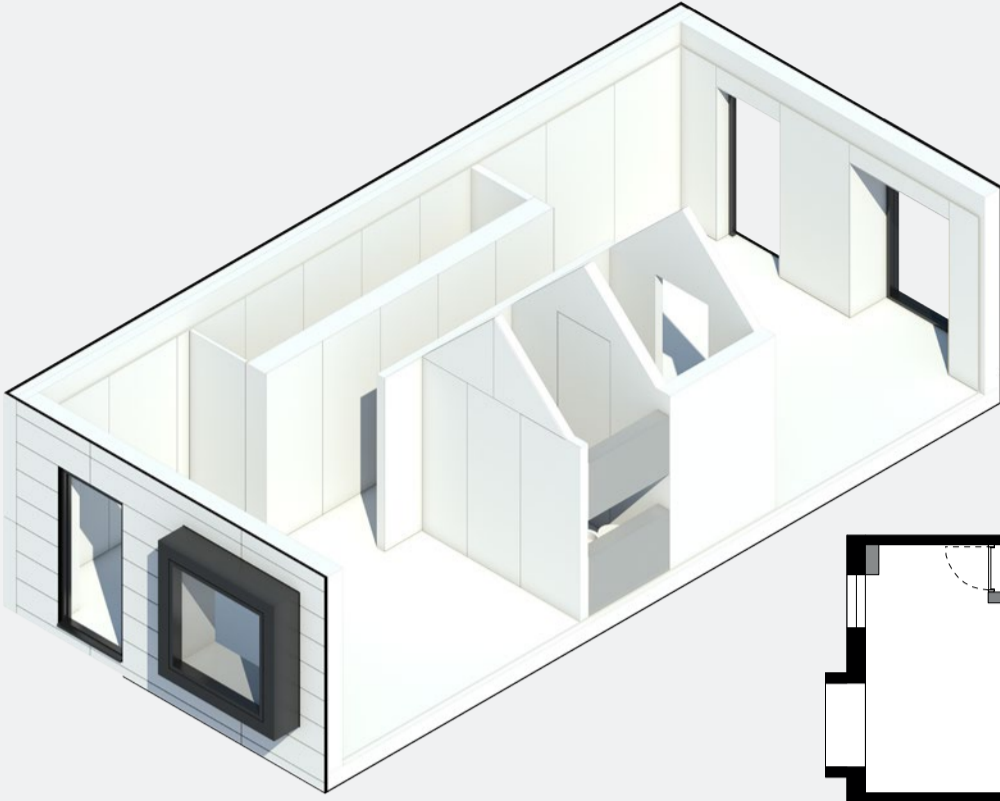


# Garden living - Living +

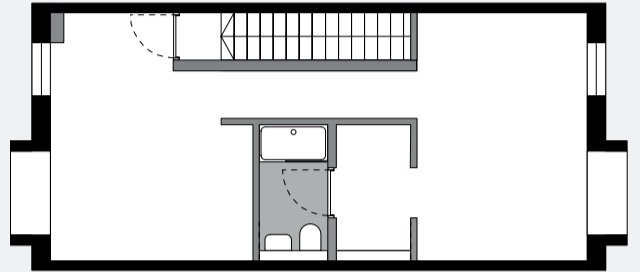
## Second floor



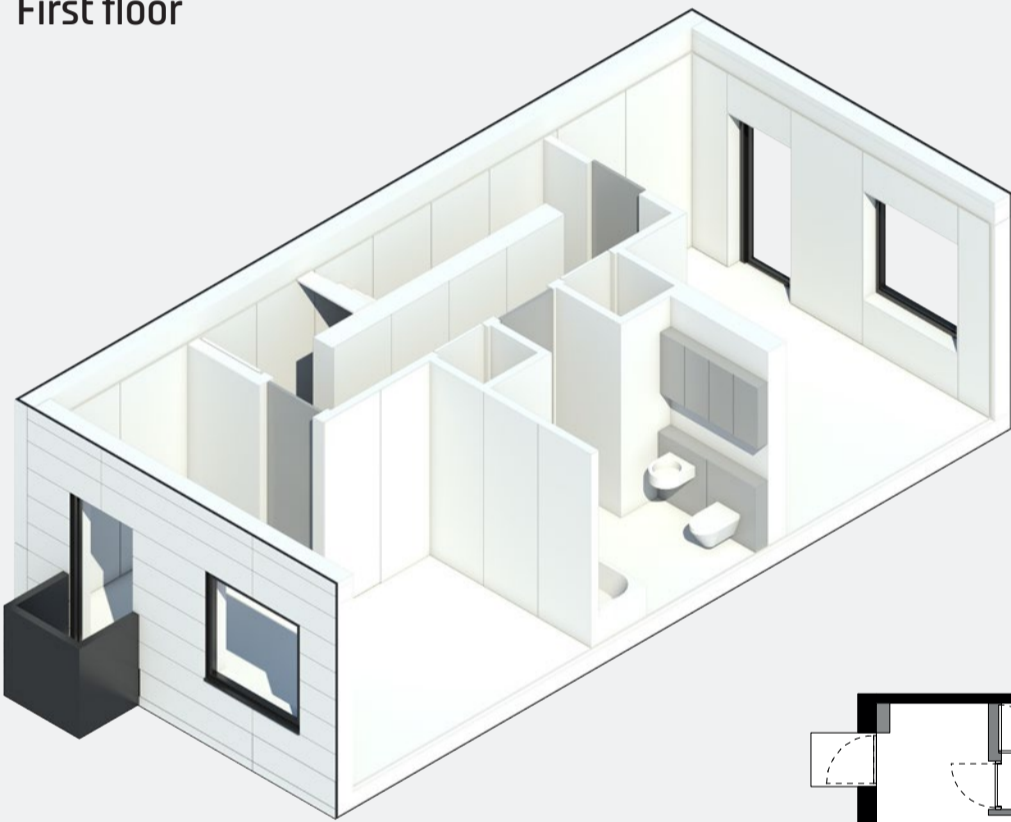
### Description

One bedroom + living  
One en-suite shower room  
3.6m max ceiling height  
Light grey spine wall

- Bathroom specification:
- Ceramic sanitary ware
  - Chrome taps and fittings
  - Mosaic tiled walls
  - Rubber floor tiles
  - Chrome fitted towel rail
  - Mirror
  - Storage cupboards



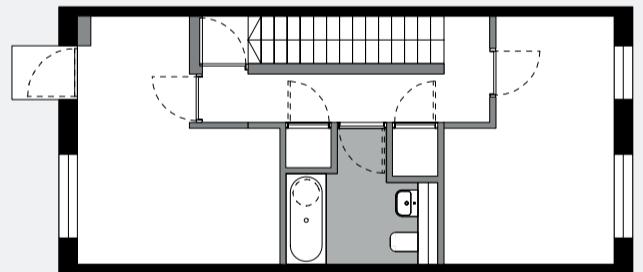
## First floor



### Description

Two bedrooms  
One bathroom  
2.66 standard ceiling height  
Light grey spine wall

- Bathroom specification:
- Ceramic sanitary ware
  - Chrome taps and fittings
  - Mosaic tiled walls
  - Rubber floor tiles
  - Chrome fitted towel rail
  - Mirror
  - Storage cupboards



## Ground floor



### Description

Open plan kitchen/living  
One bedroom  
Under stairs toilet  
2.66 standard ceiling height  
Light grey spine wall

- Kitchen specification:
- Handle-less kitchen units
  - Hob and slimline extractor
  - Integrated fridge freezer
  - Integrated oven
  - Integrated dishwasher
  - Worktop and splash-back
  - Chrome monobloc tap
  - Stainless steel sink

