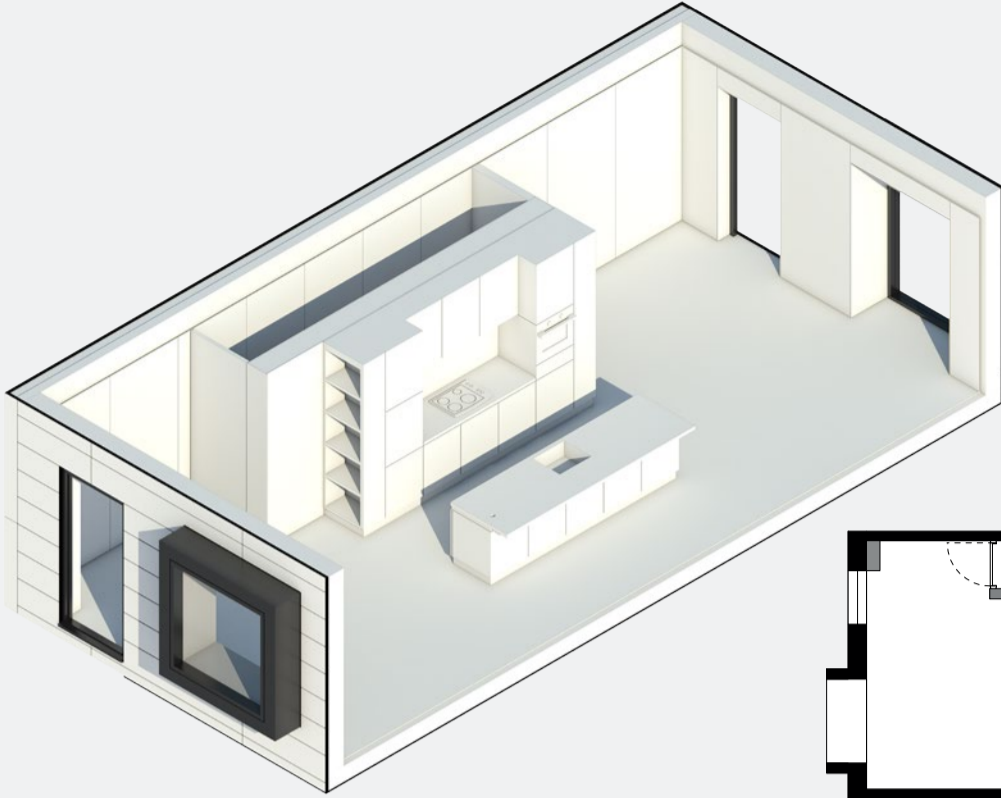


Loft living - Sleeping +

Second floor

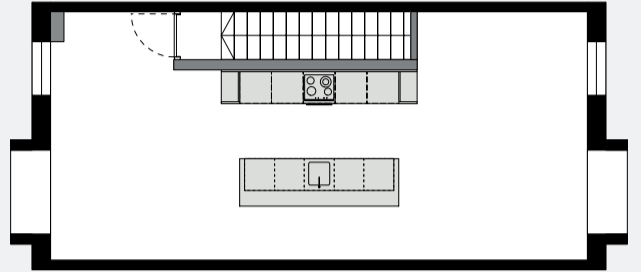


Description

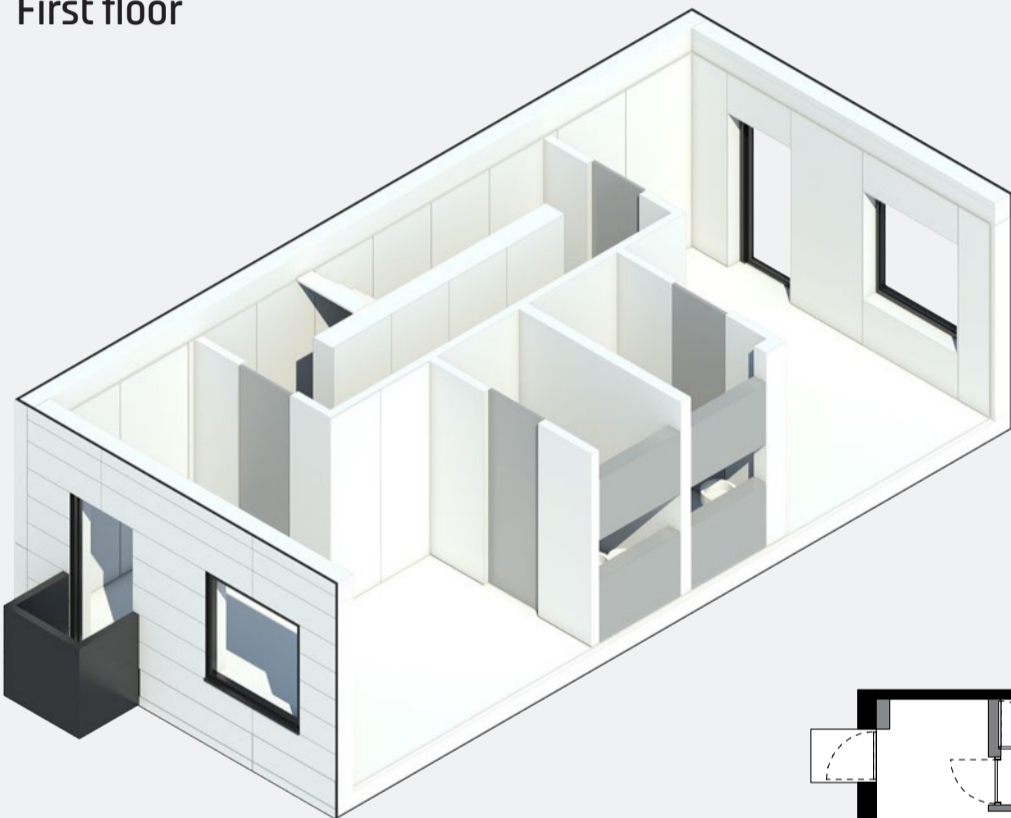
Open plan kitchen/living
3.6m max ceiling height
Light grey spine wall

Kitchen specification:

- Handle-less kitchen units
- Island unit
- Hob and slimline extractor
- Integrated fridge freezer
- Integrated oven
- Integrated dishwasher
- Worktop and splash-back
- Chrome monobloc tap
- Stainless steel sink



First floor

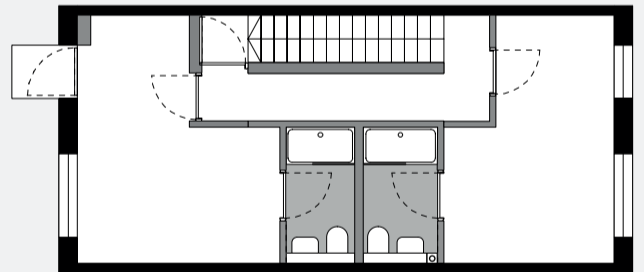


Description

Two bedrooms
Two en-suite shower rooms
2.66 standard ceiling height
Light grey spine wall

Bathroom specification:

- Ceramic sanitary ware
- Chrome taps and fittings
- Mosaic tiled walls
- Rubber floor tiles
- Chrome fitted towel rail
- Mirror
- Storage cupboards



Ground floor



Description

Two bedrooms
One bathroom
Under stairs cupboard
2.66 standard ceiling height
Light grey spine wall

Bathroom specification:

- Ceramic sanitary ware
- Chrome taps and fittings
- Mosaic tiled walls
- Rubber floor tiles
- Chrome fitted towel rail
- Mirror
- Storage cupboards

