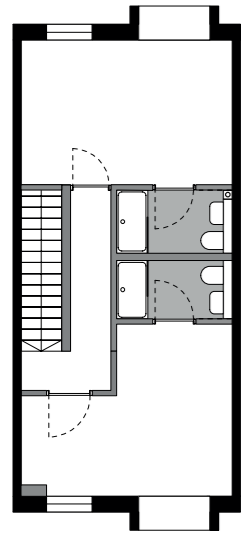


Garden living

Sleeping +



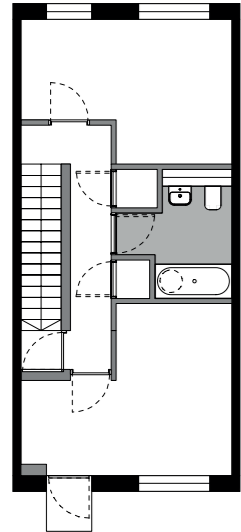
Second floor

Description

Two bedrooms
Two en-suite shower rooms
3.6m max ceiling height
Light grey spine wall

Bathroom specification:

- Ceramic sanitary ware
- Chrome taps and fittings
- Mosaic tiled walls
- Rubber floor tiles
- Chrome fitted towel rail
- Mirror
- Storage cupboards



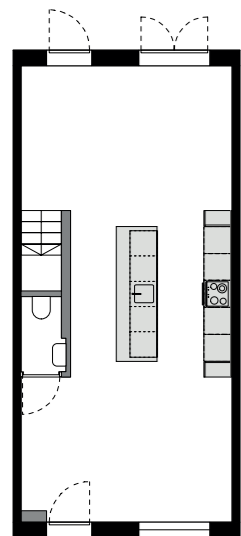
First floor

Description

Two bedrooms
One bathroom
2.66 standard ceiling height
Light grey spine wall

Bathroom specification:

- Ceramic sanitary ware
- Chrome taps and fittings
- Mosaic tiled walls
- Rubber floor tiles
- Chrome fitted towel rail
- Mirror
- Storage cupboards



Ground floor

Description

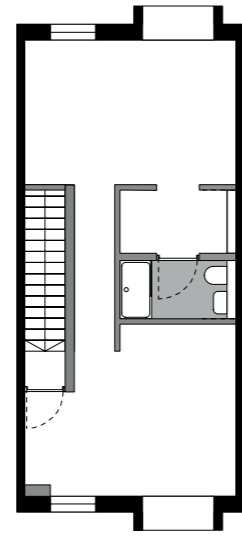
Open plan kitchen/living
Under stairs toilet
2.66 standard ceiling height
Light grey spine wall

Kitchen specification:

- Handle-less kitchen units
- Island unit
- Hob and slimline extractor
- Integrated fridge freezer
- Integrated oven
- Integrated dishwasher
- Worktop and splash-back
- Chrome monobloc tap
- Stainless steel sink

Garden living

Living +



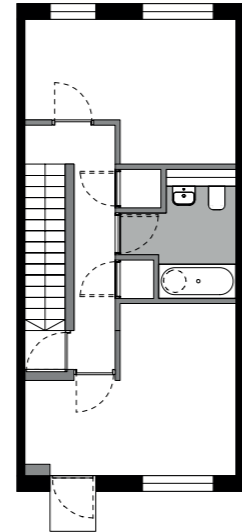
Second floor

Description

One bedroom + living
One en-suite shower room
3.6m max ceiling height
Light grey spine wall

Bathroom specification:

- Ceramic sanitary ware
- Chrome taps and fittings
- Mosaic tiled walls
- Rubber floor tiles
- Chrome fitted towel rail
- Mirror
- Storage cupboards



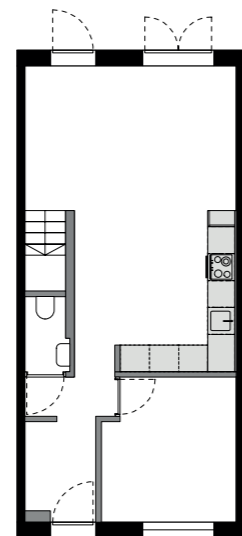
First floor

Description

Two bedrooms
One bathroom
2.66 standard ceiling height
Light grey spine wall

Bathroom specification:

- Ceramic sanitary ware
- Chrome taps and fittings
- Mosaic tiled walls
- Rubber floor tiles
- Chrome fitted towel rail
- Mirror
- Storage cupboards



Ground floor

Description

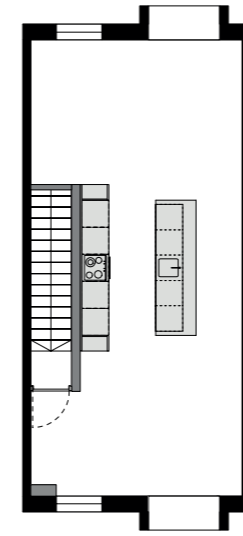
Open plan kitchen/living
One bedroom
Under stairs toilet
2.66 standard ceiling height
Light grey spine wall

Kitchen specification:

- Handle-less kitchen units
- Hob and slimline extractor
- Integrated fridge freezer
- Integrated oven
- Integrated dishwasher
- Worktop and splash-back
- Chrome monobloc tap
- Stainless steel sink

Loft living

Sleeping +



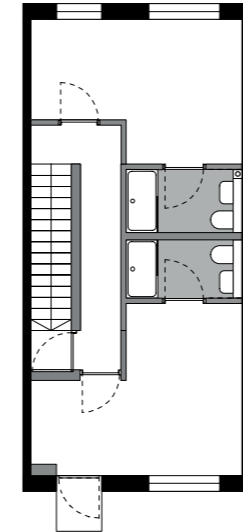
Second floor

Description

Open plan kitchen/living
3.6m max ceiling height
Light grey spine wall

Kitchen specification:

- Handle-less kitchen units
- Island unit
- Hob and slimline extractor
- Integrated fridge freezer
- Integrated oven
- Integrated dishwasher
- Worktop and splash-back
- Chrome monobloc tap
- Stainless steel sink



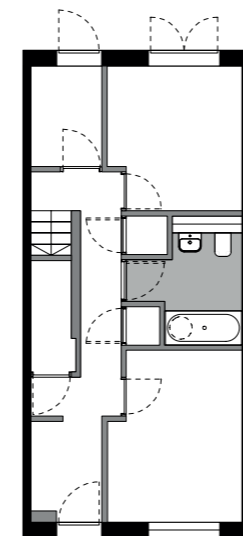
First floor

Description

Two bedrooms
Two en-suite shower rooms
2.66 standard ceiling height
Light grey spine wall

Bathroom specification:

- Ceramic sanitary ware
- Chrome taps and fittings
- Mosaic tiled walls
- Rubber floor tiles
- Chrome fitted towel rail
- Mirror
- Storage cupboards



Ground floor

Description

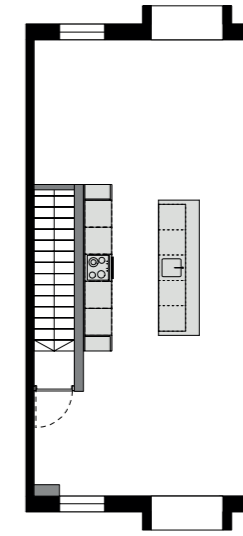
Two bedrooms
One bathroom
Under stairs cupboard
2.66 standard ceiling height
Light grey spine wall

Bathroom specification:

- Ceramic sanitary ware
- Chrome taps and fittings
- Mosaic tiled walls
- Rubber floor tiles
- Chrome fitted towel rail
- Mirror
- Storage cupboards

Loft living

Living +



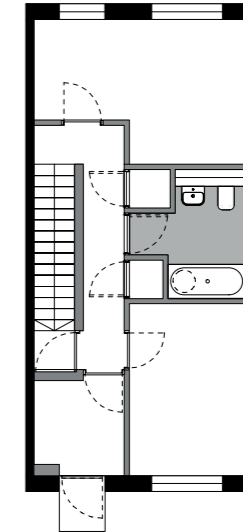
Second floor

Description

Open plan kitchen/living
3.6m max ceiling height
Light grey spine wall

Kitchen specification:

- Handle-less kitchen units
- Island unit
- Hob and slimline extractor
- Integrated fridge freezer
- Integrated oven
- Integrated dishwasher
- Worktop and splash-back
- Chrome monobloc tap
- Stainless steel sink



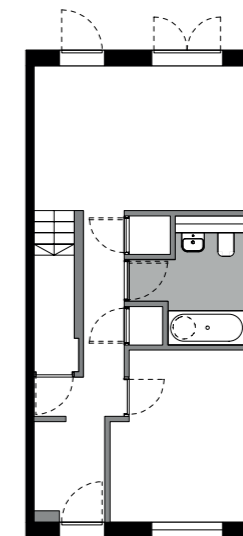
First floor

Description

Two bedrooms
One box room
One bathroom
2.66 standard ceiling height
Light grey spine wall

Bathroom specification:

- Ceramic sanitary ware
- Chrome taps and fittings
- Mosaic tiled walls
- Rubber floor tiles
- Chrome fitted towel rail
- Mirror
- Storage cupboards



Ground floor

Description

Garden room
One bedroom
One bathroom
Under stairs cupboard
2.66 standard ceiling height
Light grey spine wall

Bathroom specification:

- Ceramic sanitary ware
- Chrome taps and fittings
- Mosaic tiled walls
- Rubber floor tiles
- Chrome fitted towel rail
- Mirror
- Storage cupboards